



SSB3012D SERIES

Low Profile Power Inductors



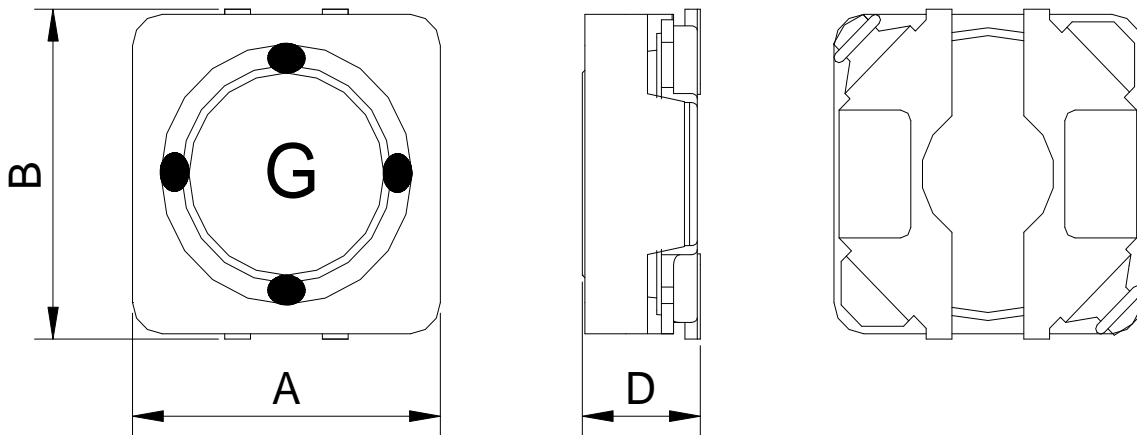
RoHS Compliant

PART NUMBERING SYSTEM

SSB	3012D	—	3 R 3 N	—	LF
TYPE	DIMENSIONS		INDUCTANCE		LEAD FREE

SHAPES AND DIMENSIONS

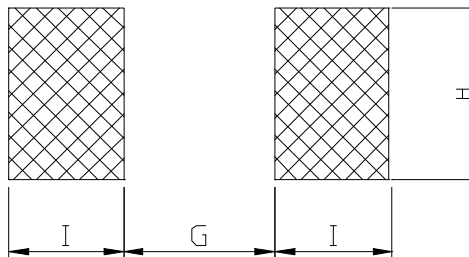
UNIT : mm



A=3.1 Max. B=3.1 Max. D=1.2 Max.

RECOMMENDED PATTERNS

UNIT : mm



G=0.6 H=3.3 I=1.3



SSB3012D SERIES

Low Profile Shielded Power Inductors



RoHS Compliant

ELECTRICAL CHARACTERISTICS :

PART NUMBER	INDUCTANCE (μ H)	DCR (Ω) Max.(Typ.)	Isat (A) (Max.)	Irms (A) (Max.)	Stamp
SSB3012D-R68N-LF	0.68 \pm 30%	52.8m(44m)	2.10	1.85	8
SSB3012D-1R0N-LF	1.0 \pm 30%	63.6m(53m)	1.90	1.70	A
SSB3012D-1R2N-LF	1.2 \pm 30%	63.6m(53m)	1.90	1.70	B
SSB3012D-1R5N-LF	1.5 \pm 30%	80.4m(67m)	1.70	1.55	C
SSB3012D-2R2N-LF	2.2 \pm 30%	0.112(93m)	1.30	1.40	E
SSB3012D-3R3N-LF	3.3 \pm 30%	0.156(0.13)	1.10	1.20	G
SSB3012D-4R7M-LF	4.7 \pm 20%	0.228(0.19)	0.95	0.95	I
SSB3012D-6R8M-LF	6.8 \pm 20%	0.312(0.26)	0.80	0.80	K
SSB3012D-100M-LF	10 \pm 20%	0.432(0.36)	0.65	0.67	M
SSB3012D-150M-LF	15 \pm 20%	0.636(0.53)	0.55	0.56	O
SSB3012D-220M-LF	22 \pm 20%	0.948(0.79)	0.45	0.41	Q
SSB3012D-330M-LF	33 \pm 20%	1.368(1.14)	0.36	0.31	S
SSB3012D-470M-LF	47 \pm 20%	1.836(1.53)	0.30	0.22	U

- Inductance tested at 100 kHz, 0.1 Vrms, 0 Adc using an Agilent/HP 4284B LCR meter or equivalent.
- Isat : DC current at which the inductance drops 30% (typ) from its value without current.
- Irms: The actual current when temperature of coil becomes $\Delta 40^{\circ}\text{C}$. (Ta=+25 $^{\circ}\text{C}$)
 Operating temperature range -40 $^{\circ}\text{C}$ to +85 $^{\circ}\text{C}$, Electrical specifications at 25 $^{\circ}\text{C}$.