



**Coilmaster Electronics Co., Ltd.**

9F-3 No.398, Huan Bei Rd. Chung Li City, Taoyuan 320, Taiwan  
Tel : +886-3-422-8279 Fax : +886-3-422-8734

E-mail : [info@coilmaster.com.tw](mailto:info@coilmaster.com.tw)

Web Site : [www.coilmaster.com.tw](http://www.coilmaster.com.tw)

## SDR0504K SERIES – SMD POWER INDUCTORS



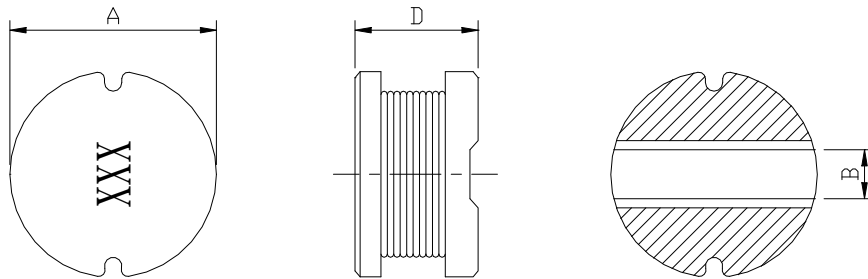
RoHS Compliant

### PART NUMBERING SYSTEM

<u>SDR</u>	<u>0 5 0 4 K</u>	—	<u>6 8 0 K</u>	—	<u>LF</u>
TYPE	DIMENSIONS		INDUCTANCE		LEAD FREE

### SHAPES AND DIMENSIONS

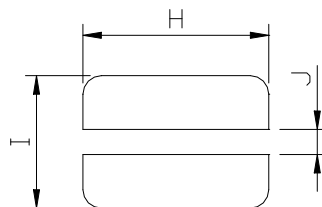
UNIT : mm



A=5.8 Max. B=1.8 Typ. D=4.8 Max.

### RECOMMENDED PATTERNS

UNIT : mm



H=5.8 ref. I=6.0 ref. J=1.8 ref.

### FEATURES

- ⊙ Available for lead free and RoHS compliant
- ⊙ Excellent solderability and high heat resistance
- ⊙ Excellent terminal strength constructions
- ⊙ Small diameter of only 5.8mm maximum and low profile of 4.8mm max.

### APPLICATION

- ⊙ Input / output of DC/DC converters
- ⊙ Power supplies for LCD TVs , Car radios , Camcorders , Portable communication equipment

**SDR0504K SERIES – SMD POWER INDUCTORS**

RoHS Compliant

**SPECIFICATION TABLE**

PART NUMBER	INDUCTANCE ( $\mu$ H)	Q (Ref.)	DCR ( $\Omega$ ) (Max.)	IDC ( A ) (Max.)	TEST FREQ. (MHz)
SDR0504K-1R2M-LF	1.2 $\pm$ 20%	35	0.02	4.20	7.96
SDR0504K-1R5M-LF	1.5 $\pm$ 20%	32	0.03	3.60	7.96
SDR0504K-2R2M-LF	2.2 $\pm$ 20%	33	0.06	2.80	7.96
SDR0504K-2R7M-LF	2.7 $\pm$ 20%	22	0.06	2.30	7.96
SDR0504K-3R3M-LF	3.3 $\pm$ 20%	22	0.07	2.00	7.96
SDR0504K-3R9M-LF	3.9 $\pm$ 20%	22	0.07	1.90	7.96
SDR0504K-4R7M-LF	4.7 $\pm$ 20%	22	0.08	1.80	7.96
SDR0504K-5R6M-LF	5.6 $\pm$ 20%	20	0.08	1.70	7.96
SDR0504K-6R8M-LF	10 $\pm$ 20%	20	0.12	1.60	7.96
SDR0504K-8R2M-LF	12 $\pm$ 20%	20	0.09	1.50	7.96
SDR0504K-100M-LF	10 $\pm$ 20%	20	0.10	1.45	2.52
SDR0504K-120M-LF	12 $\pm$ 20%	30	0.12	1.40	2.52
SDR0504K-150L-LF	15 $\pm$ 15%	30	0.14	1.30	2.52
SDR0504K-180L-LF	18 $\pm$ 15%	30	0.15	1.25	2.52
SDR0504K-220L-LF	22 $\pm$ 15%	30	0.19	1.10	2.52
SDR0504K-270L-LF	27 $\pm$ 15%	28	0.22	1.00	2.52
SDR0504K-330K-LF	33 $\pm$ 10%	24	0.25	0.88	2.52
SDR0504K-390K-LF	39 $\pm$ 10%	24	0.32	0.80	2.52
SDR0504K-470K-LF	47 $\pm$ 10%	22	0.37	0.72	2.52
SDR0504K-560K-LF	56 $\pm$ 10%	22	0.42	0.68	2.52
SDR0504K-680K-LF	68 $\pm$ 10%	22	0.52	0.62	2.52
SDR0504K-820K-LF	82 $\pm$ 10%	20	0.60	0.58	2.52
SDR0504K-101K-LF	100 $\pm$ 10%	20	0.70	0.52	0.796
SDR0504K-121K-LF	120 $\pm$ 10%	22	0.93	0.48	0.796
SDR0504K-151K-LF	150 $\pm$ 10%	20	1.10	0.40	0.796
SDR0504K-181K-LF	180 $\pm$ 10%	20	1.38	0.38	0.796
SDR0504K-221K-LF	220 $\pm$ 10%	20	1.57	0.35	0.796
SDR0504K-271K-LF	270 $\pm$ 10%	26	1.88	0.32	0.796
SDR0504K-331K-LF	330 $\pm$ 10%	25	2.25	0.27	0.796
SDR0504K-391K-LF	390 $\pm$ 10%	25	2.48	0.25	0.796
SDR0504K-471K-LF	470 $\pm$ 10%	25	3.30	0.21	0.796
SDR0504K-561K-LF	560 $\pm$ 10%	24	4.00	0.18	0.252
SDR0504K-681K-LF	680 $\pm$ 10%	26	4.65	0.16	0.252
SDR0504K-821K-LF	820 $\pm$ 10%	25	5.20	0.14	0.252

- DC current at which the inductance drops 10% (typ) from its value without current.
- Operating temperature range -40°C to +125°C ,
- Electrical specifications at 25°C.

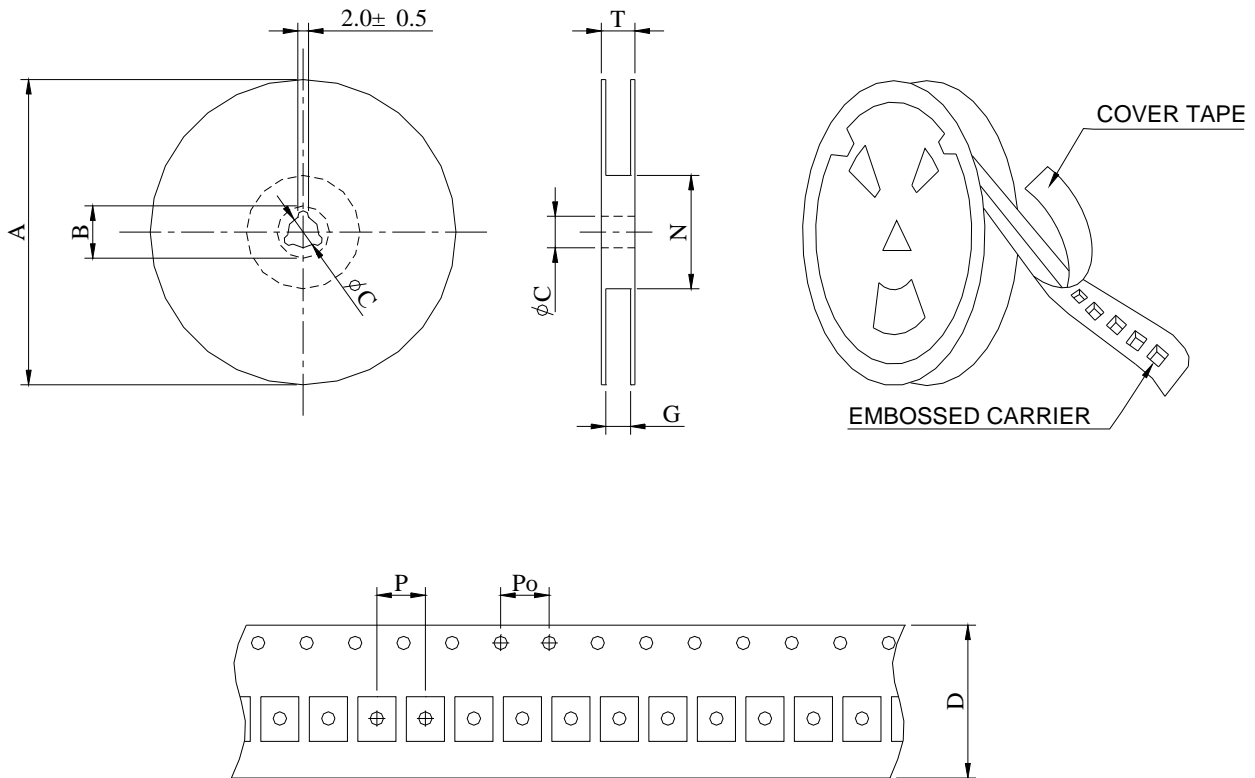


# SDR0504K SERIES – SMD POWER INDUCTORS



## PACKAGING SPECIFICATION

RoHS Compliant



SERIES	Q' TY (PCS)	DIMENSIONS (m/m)								
		A	B $\pm 0.8$	C $\pm 0.5$	D	G $^{+0}$	N $^0$	P	P $_0$	T
SDR0504K	1500	330	21	13	12	14	50	8	4	18.4