



Coilmaster Electronics Co., Ltd.

9F-3 No.398, Huan Bei Rd. Chung Li City, Taoyuan 320, Taiwan
Tel : +886-3-422-8279 Fax : +886-3-422-8734

E-mail : info@coilmaster.com.tw

Web Site : www.coilmaster.com.tw

SDR0705K SERIES – SMD POWER INDUCTORS



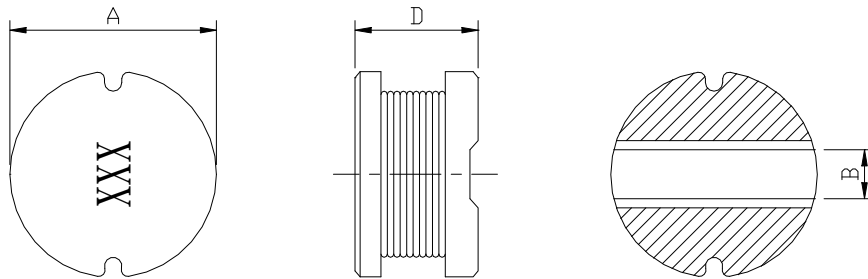
RoHS Compliant

PART NUMBERING SYSTEM

<u>SDR</u>	<u>0 7 0 5 K</u>	—	<u>6 8 0 K</u>	—	<u>LF</u>
TYPE	DIMENSIONS		INDUCTANCE		LEAD FREE

SHAPES AND DIMENSIONS

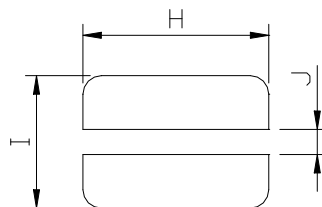
UNIT : mm



A=7.8 Max. B=2.6 Typ. D=5.3 Max.

RECOMMENDED PATTERNS

UNIT : mm



H=8.0 Max. I=8.0 Max. J=2.6 Max.

FEATURES

- ⊙ Available for lead free and RoHS compliant
- ⊙ Excellent solder ability and high heat resistance
- ⊙ Inductance value from 1.5uH to 4,700uH
- ⊙ Excellent terminal strength constructions
- ⊙ Small diameter of only 7.8mm maximum and low profile of 5.3mm max.

APPLICATION

- ⊙ Input / output of DC/DC converters
- ⊙ Power supplies for LCD TVs , Car radios , Camcorders , Portable communication equipment



Coilmaster Electronics Co., Ltd.

9F-3 No.398, Huan Bei Rd. Chung Li City, Taoyuan 320, Taiwan
Tel : +886-3-422-8279 Fax : +886-3-422-8734

E-mail : info@coilmaster.com.tw

Web Site : www.coilmaster.com.tw

SDR0705K SERIES – SMD POWER INDUCTORS



RoHS Compliant

SPECIFICATION TABLE

PART NUMBER	INDUCTANCE (μ H)	Q (Ref.)	DCR (Ω) (Max.)	IDC (A) (Max.)	TEST FREQ. (MHz)
SDR0705K-1R5M-LF	1.5 \pm 20%	32	0.02	9.10	7.96
SDR0705K-2R5M-LF	2.5 \pm 20%	32	0.02	7.20	7.96
SDR0705K-3R3M-LF	3.3 \pm 20%	32	0.02	6.30	7.96
SDR0705K-3R9M-LF	3.9 \pm 20%	32	0.02	5.70	7.96
SDR0705K-4R7M-LF	4.7 \pm 20%	31	0.03	5.00	7.96
SDR0705K-5R6M-LF	5.6 \pm 20%	31	0.04	4.60	7.96
SDR0705K-6R8M-LF	6.8 \pm 20%	30	0.04	4.10	7.96
SDR0705K-7R5M-LF	7.5 \pm 20%	29	0.05	3.70	7.96
SDR0705K-100M-LF	10 \pm 20%	25	0.07	3.20	2.52
SDR0705K-120M-LF	12 \pm 20%	25	0.08	3.00	2.52
SDR0705K-150M-LF	15 \pm 20%	25	0.09	2.70	2.52
SDR0705K-180M-LF	18 \pm 20%	20	0.10	2.60	2.52
SDR0705K-220M-LF	22 \pm 20%	20	0.11	2.30	2.52
SDR0705K-270K-LF	27 \pm 10%	20	0.12	2.10	2.52
SDR0705K-330K-LF	33 \pm 10%	15	0.14	1.90	2.52
SDR0705K-390K-LF	39 \pm 10%	15	0.16	1.70	2.52
SDR0705K-470K-LF	47 \pm 10%	15	0.20	1.60	2.52
SDR0705K-560K-LF	56 \pm 10%	15	0.24	1.50	2.52
SDR0705K-680K-LF	68 \pm 10%	15	0.30	1.30	2.52
SDR0705K-820K-LF	82 \pm 10%	12	0.37	1.20	2.52
SDR0705K-101K-LF	100 \pm 10%	12	0.45	1.10	0.796
SDR0705K-121K-LF	120 \pm 10%	12	0.48	1.00	0.796
SDR0705K-151K-LF	150 \pm 10%	12	0.68	0.85	0.796
SDR0705K-181K-LF	180 \pm 10%	12	0.77	0.80	0.796
SDR0705K-221K-LF	220 \pm 10%	12	0.96	0.80	0.796
SDR0705K-271K-LF	270 \pm 10%	12	1.11	0.66	0.796
SDR0705K-331K-LF	330 \pm 10%	12	1.26	0.58	0.796
SDR0705K-391K-LF	390 \pm 10%	12	1.77	0.55	0.796
SDR0705K-471K-LF	470 \pm 10%	12	1.96	0.50	0.796
SDR0705K-561K-LF	560 \pm 10%	30	2.50	0.46	0.796
SDR0705K-681K-LF	680 \pm 10%	29	2.80	0.42	0.796
SDR0705K-821K-LF	820 \pm 10%	28	4.00	0.35	0.796
SDR0705K-102K-LF	1000 \pm 10%	27	4.50	0.34	0.252
SDR0705K-122K-LF	1200 \pm 10%	28	6.80	0.28	0.252
SDR0705K-152K-LF	1500 \pm 10%	27	8.00	0.26	0.252
SDR0705K-182K-LF	1800 \pm 10%	30	9.20	0.23	0.252
SDR0705K-222K-LF	2200 \pm 10%	29	10.00	0.20	0.252
SDR0705K-272K-LF	2700 \pm 10%	31	11.80	0.18	0.252
SDR0705K-332K-LF	3300 \pm 10%	28	16.50	0.17	0.252
SDR0705K-392K-LF	3900 \pm 10%	28	18.00	0.16	0.252
SDR0705K-472K-LF	4700 \pm 10%	30	21.00	0.15	0.252

- DC current at which the inductance drops 10% (typ) from its value without current.
- Operating temperature range -40°C to +125°C ,
- Electrical specifications at 25°C.

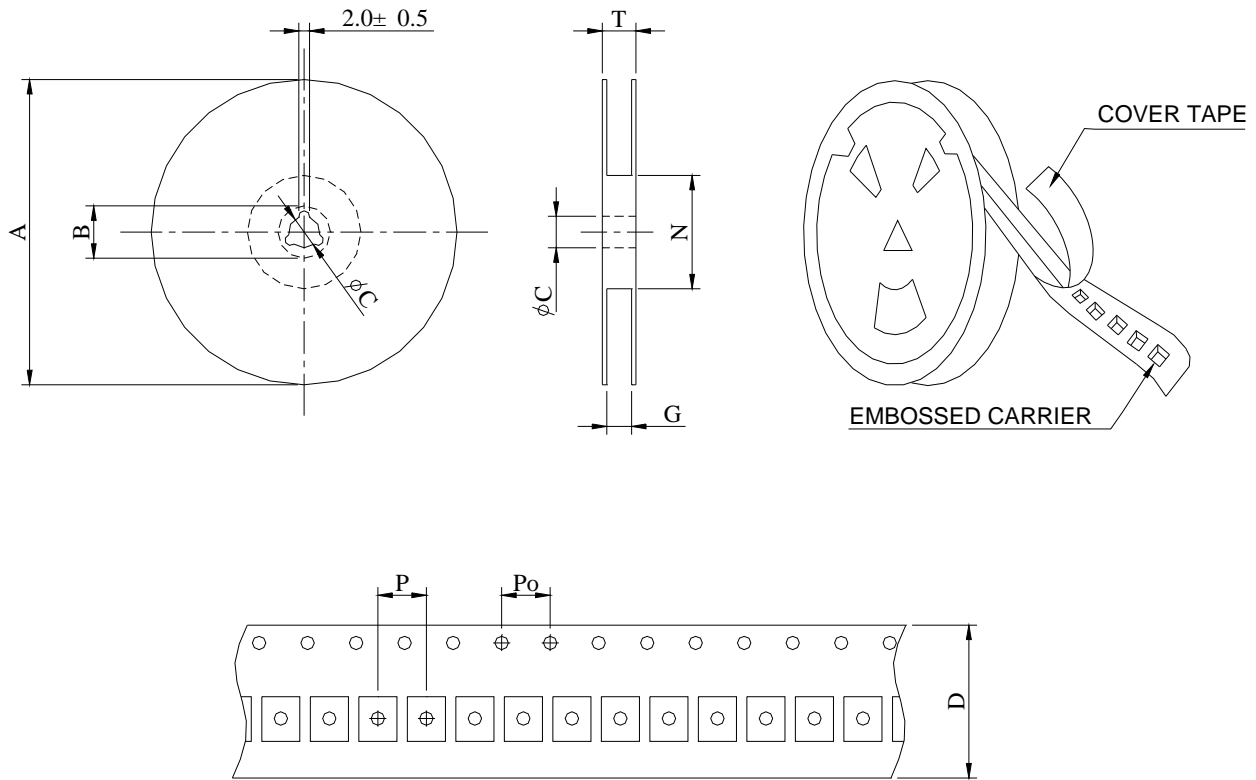


SDR0705K SERIES – SMD POWER INDUCTORS



RoHS Compliant

PACKAGING SPECIFICATION



SERIES	Q' TY (PCS)	DIMENSIONS (m/m)								
		A	B ± 0.8	C ± 0.5	D	G $^{+0}$	N 0	P	Po	T
SDR0705K	1000	330	21	13	16	18	50	12	4	22.4