



SDS5218 SERIES ~

SMD Shielded Power Inductors



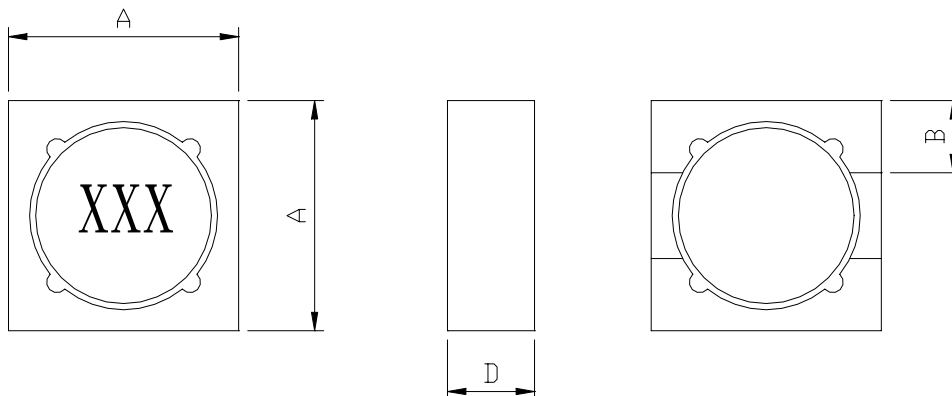
RoHS Compliant

PART NUMBERING SYSTEM

SDS	5 2 1 8	—	6 8 0 M	—	LF
TYPE	DIMENSIONS		INDUCTANCE		LEAD FREE

SHAPES AND DIMENSIONS

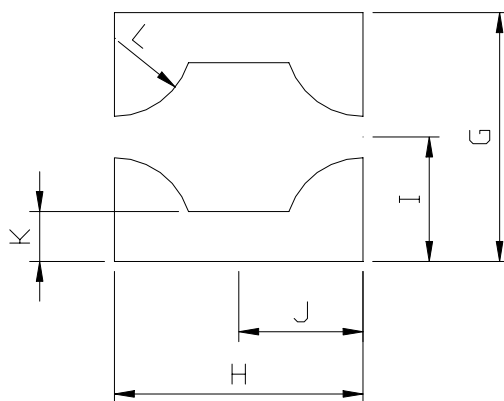
UNIT : mm



A=5.2 Max. B=5.2 Max. D=1.8 Max

RECOMMENDED PATTERNS

UNIT : mm



G=5.95 H=5.15 I=2.975 J=2.575 K=1.0 L=2.25



SDS5218 SERIES ~

SMD Shielded Power Inductors



RoHS Compliant

SPECIFICATION TABLE

PART NUMBER	INDUCTANCE (μ H)	DCR (Ω) (Max.)	I _{rms} (A) (Max.)	I _{sat} (A) (Max.)	TEST FREQ. (f)
SDS5218-R47M-LF	0.47 \pm 20%	0.0251	3.58	4.63	100KHz
SDS5218-R82M-LF	0.82 \pm 20%	0.0309	3.24	3.60	100KHz
SDS5218-1R2M-LF	1.2 \pm 20%	0.0368	2.97	2.95	100KHz
SDS5218-1R5M-LF	1.5 \pm 20%	0.0431	2.73	2.49	100KHz
SDS5218-2R2M-LF	2.2 \pm 20%	0.0498	2.55	2.16	100KHz
SDS5218-3R3M-LF	3.3 \pm 20%	0.0756	2.07	1.71	100KHz
SDS5218-4R7M-LF	4.7 \pm 20%	0.103	1.77	1.54	100KHz
SDS5218-6R2M-LF	6.2 \pm 20%	0.125	1.61	1.30	100KHz
SDS5218-8R2M-LF	8.2 \pm 20%	0.169	1.38	1.12	100KHz
SDS5218-100M-LF	10 \pm 20%	0.198	1.28	0.982	100KHz
SDS5218-150M-LF	15 \pm 20%	0.285	1.06	0.831	100KHz
SDS5218-220M-LF	22 \pm 20%	0.421	0.876	0.689	100KHz
SDS5218-330M-LF	33 \pm 20%	0.632	0.715	0.568	100KHz
SDS5218-470M-LF	47 \pm 20%	0.967	0.578	0.470	100KHz
SDS5218-680M-LF	68 \pm 20%	1.225	0.514	0.390	100KHz
SDS5218-820M-LF	82 \pm 20%	1.625	0.446	0.356	100KHz
SDS5218-101M-LF	100 \pm 20%	1.838	0.419	0.321	100KHz
SDS5218-151M-LF	150 \pm 20%	2.725	0.345	0.263	100KHz
SDS5218-221M-LF	220 \pm 20%	3.688	0.296	0.217	100KHz
SDS5218-331M-LF	330 \pm 20%	5.25	0.248	0.177	100KHz
SDS5218-471M-LF	470 \pm 20%	7.99	0.201	0.148	100KHz
SDS5218-681M-LF	680 \pm 20%	11.60	0.167	0.124	100KHz
SDS5218-821M-LF	820 \pm 20%	15.44	0.145	0.113	100KHz
SDS5218-102M-LF	1000 \pm 20%	17.51	0.136	0.102	100KHz

- I_{sat} : DC current at which the inductance drops 30% (typ) from its value without current.
- I_{rms} : Average current for 40°C temperature rise from 25°C ambient.
- Operating temperature range -40°C to +85°C ,
- Electrical specifications at 20°C .



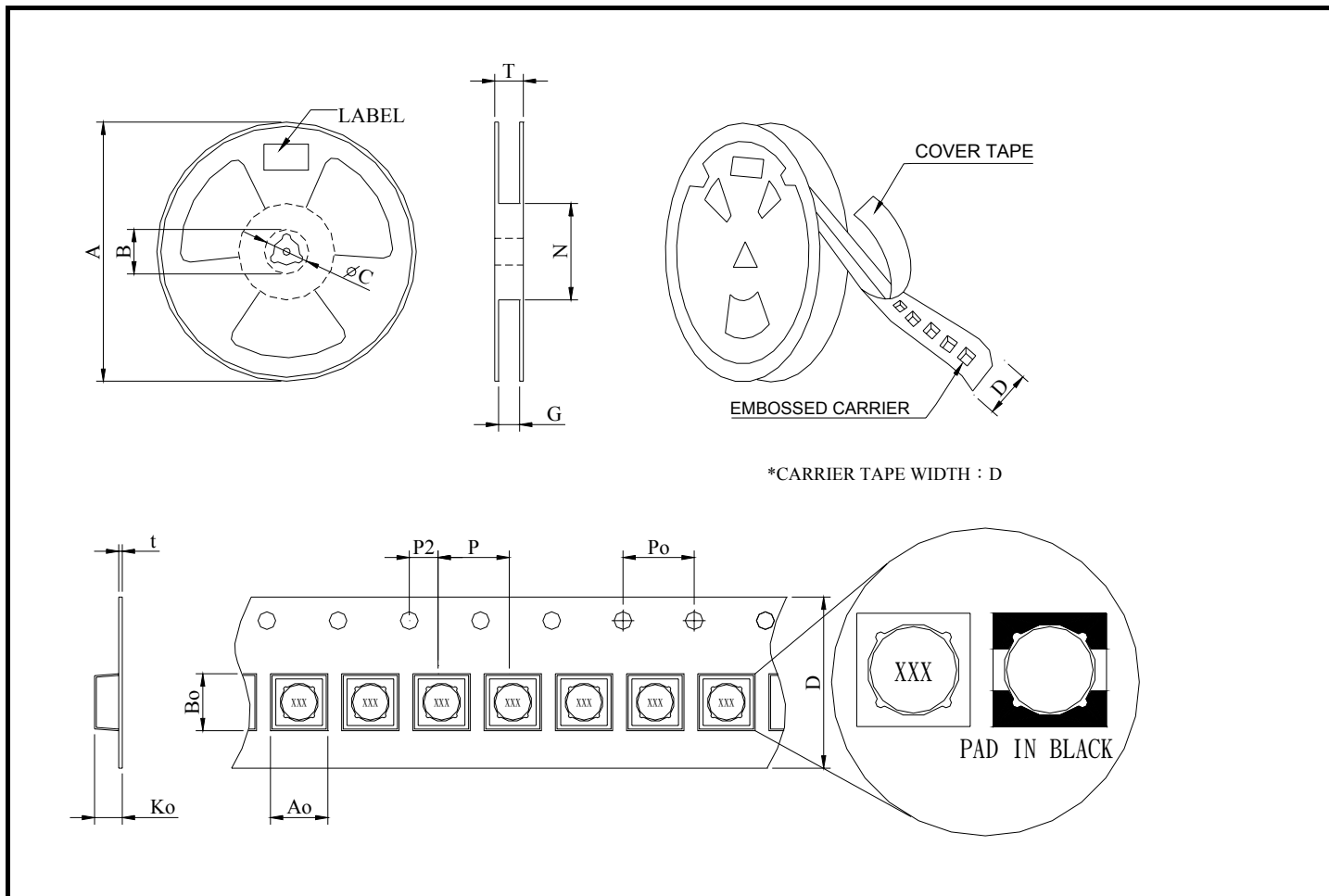
SDS5218 SERIES ~

SMD Shielded Power Inductors



RoHS Compliant

PACKAGING SPECIFICATION



STAYLE	DIMENSIONS (m/m)														
	Q'TY (PCS)	A	B	C	D	G	N	T	Ao	Bo	Ko	t	P	Po	P2
13"	2,000	—	—	—	12 ±0.3	—	—	—	5.45	5.45	2.0	—	8	4	2 ±0.02