



# SDS5225 SERIES ~

## SMD Shielded Power Inductors



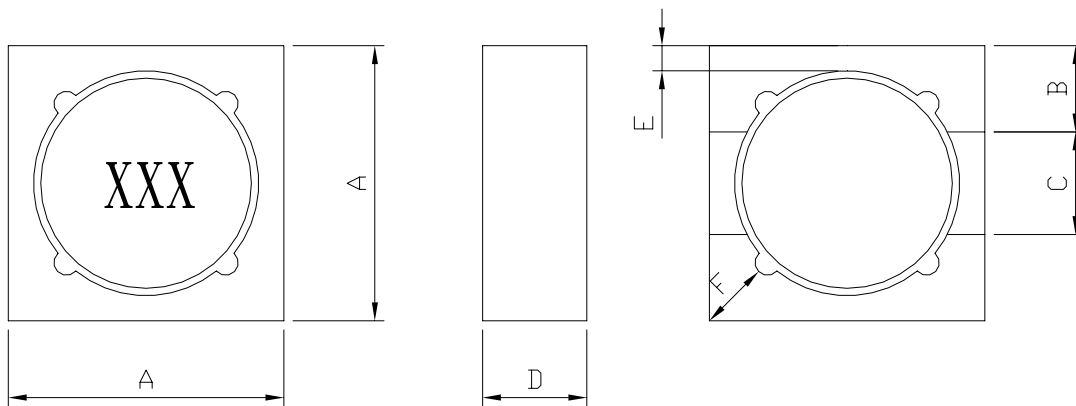
RoHS Compliant

### PART NUMBERING SYSTEM

<b>SDS</b>	<b>5 2 2 5</b>	—	<b>6 8 0 M</b>	—	<b>LF</b>
TYPE	DIMENSIONS		INDUCTANCE		LEAD FREE

### SHAPES AND DIMENSIONS

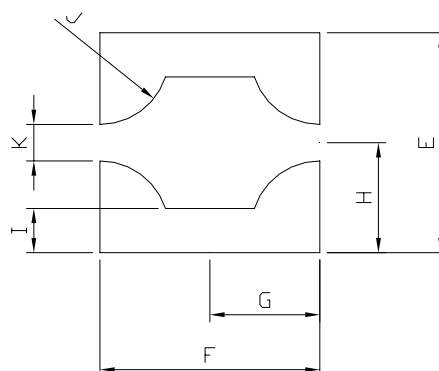
UNIT : mm



A=5.2 Max. B=1.5 Typ. C=1.8 Ref. D=2.5 Max E=0.6 Ref. F=1.2 Ref.

### RECOMMENDED PATTERNS

UNIT : mm



E=5.95 F=5.15 G=2.575 H=2.975 I=1.0 J=2.25 K=1.45



# SDS5225 SERIES ~

## SMD Shielded Power Inductors



RoHS Compliant

### SPECIFICATION TABLE

PART NUMBER	INDUCTANCE ( $\mu$ H)	DCR ( $\Omega$ ) (Max.)	I <sub>rms</sub> (A) (Max.)	I <sub>sat</sub> (A) (Max.)	TEST FREQ. ( f )
SDS5225-R47M-LF	0.47 $\pm$ 20%	0.0221	3.88	6.00	100KHz
SDS5225-R82M-LF	0.82 $\pm$ 20%	0.0260	3.58	4.67	100KHz
SDS5225-1R2M-LF	1.2 $\pm$ 20%	0.0300	3.33	3.81	100KHz
SDS5225-1R5M-LF	1.5 $\pm$ 20%	0.0343	3.12	3.23	100KHz
SDS5225-2R2M-LF	2.2 $\pm$ 20%	0.0389	2.93	2.8	100KHz
SDS5225-3R3M-LF	3.3 $\pm$ 20%	0.0480	2.64	2.21	100KHz
SDS5225-4R7M-LF	4.7 $\pm$ 20%	0.0584	2.39	1.83	100KHz
SDS5225-6R2M-LF	6.2 $\pm$ 20%	0.0695	2.19	1.56	100KHz
SDS5225-8R2M-LF	8.2 $\pm$ 20%	0.0905	1.92	1.45	100KHz
SDS5225-100M-LF	10 $\pm$ 20%	0.1030	1.80	1.27	100KHz
SDS5225-150M-LF	15 $\pm$ 20%	0.1195	1.67	1.08	100KHz
SDS5225-220M-LF	22 $\pm$ 20%	0.1848	1.34	0.857	100KHz
SDS5225-330M-LF	33 $\pm$ 20%	0.2686	1.11	0.711	100KHz
SDS5225-470M-LF	47 $\pm$ 20%	0.3945	0.919	0.592	100KHz
SDS5225-680M-LF	68 $\pm$ 20%	0.6063	0.741	0.482	100KHz
SDS5225-820M-LF	82 $\pm$ 20%	0.6553	0.713	0.441	100KHz
SDS5225-100M-LF	100 $\pm$ 20%	0.7421	0.670	0.398	100KHz
SDS5225-151M-LF	150 $\pm$ 20%	1.0904	0.553	0.328	100KHz
SDS5225-221M-LF	220 $\pm$ 20%	1.6750	0.446	0.268	100KHz
SDS5225-331M-LF	330 $\pm$ 20%	2.5875	0.359	0.129	100KHz
SDS5225-471M-LF	470 $\pm$ 20%	3.875	0.293	0.184	100KHz
SDS5225-681M-LF	680 $\pm$ 20%	4.850	0.262	0.154	100KHz
SDS5225-821M-LF	820 $\pm$ 20%	6.300	0.230	0.139	100KHz
SDS5225-102M-LF	1000 $\pm$ 20%	7.125	0.216	0.126	100KHz

- I<sub>sat</sub> : DC current at which the inductance drops 30% (typ) from its value without current.
- I<sub>rms</sub> : Average current for 40°C temperature rise from 25°C ambient.
- Operating temperature range -40°C to +85°C ,
- Electrical specifications at 20°C .



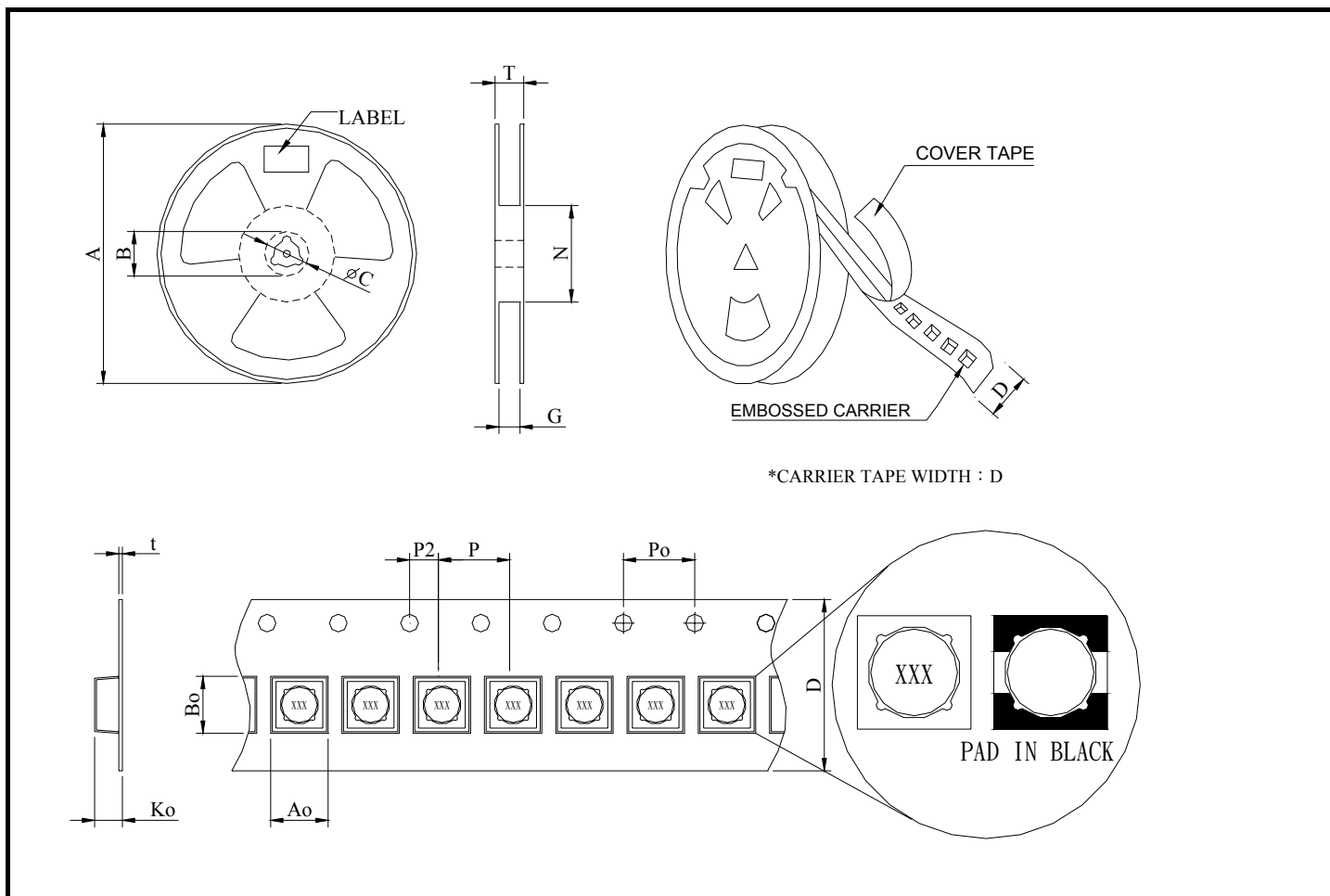
# SDS5225 SERIES ~

## SMD Shielded Power Inductors



RoHS Compliant

### PACKAGING SPECIFICATION



STAYLE	DIMENSIONS (m/m)														
	Q'TY (PCS)	A	B	C	D	G	N	T	Ao	Bo	Ko	t	P	Po	P2
13"	2,000	—	—	—	12 ±0.3	—	—	—	5.45	5.45	2.7	—	8	4	2 ±0.02