



SDC2D16J SERIES

Low Profile Shielded Power Inductors



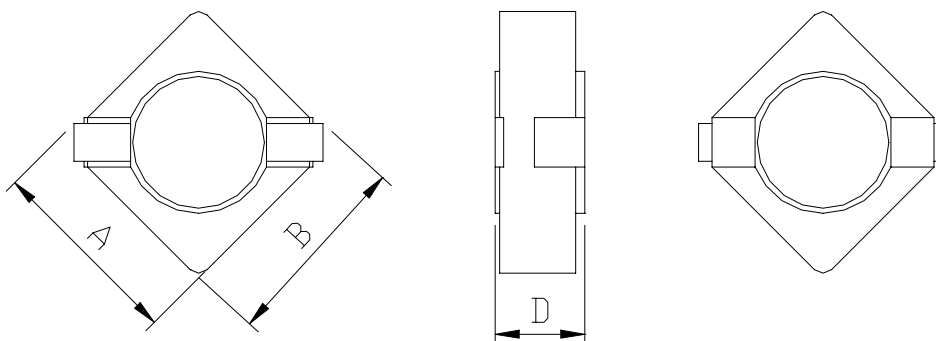
RoHS Compliant

PART NUMBERING SYSTEM

<u>SDC</u>	<u>2 D 1 6 J</u>	—	<u>1 R 5 N</u>	—	<u>LF</u>
TYPE	DIMENSIONS		INDUCTANCE		LEAD FREE

SHAPES AND DIMENSIONS

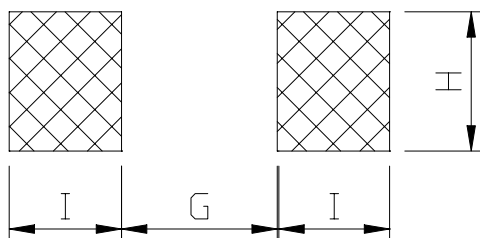
UNIT : mm



A=3.2 max. B=3.2 max. D=1.7 max.

RECOMMENDED PATTERNS

UNIT : mm



G=2.2 H=1.3 I=1.05



SDC2D16J SERIES

Low Profile Shielded Power Inductors



RoHS Compliant

ELECTRICAL CHARACTERISTICS :

PART NUMBER	INDUCTANCE (μ H)	DCR (m Ω) (Max.)	Isat (A) (Max.)	Irms (A) (Max.)	TEST FREQ. (f)
SDC2D16J-1R5N-LF	1.5 \pm 30%	50	1.40	2.72	100KHz
SDC2D16J-3R3N-LF	3.3 \pm 30%	110	0.97	1.80	100KHz
SDC2D16J-4R7N-LF	4.7 \pm 30%	140	0.77	1.60	100KHz
SDC2D16J-5R6N-LF	5.6 \pm 30%	210	0.71	1.33	100KHz
SDC2D16J-6R8N-LF	6.8 \pm 30%	240	0.64	1.24	100KHz
SDC2D16J-8R2N-LF	8.2 \pm 30%	260	0.58	1.19	100KHz
SDC2D16J-100M-LF	10 \pm 20%	335	0.53	1.04	100KHz
SDC2D16J-120M-LF	12 \pm 20%	470	0.50	0.88	100KHz
SDC2D16J-150M-LF	15 \pm 20%	535	0.45	0.83	100KHz
SDC2D16J-220M-LF	22 \pm 20%	625	0.37	0.75	100KHz

- Isat : DC current at which the inductance drops 30% (typ) from its value without current.
- Irms : The actual current when temperature of coil becomes $\Delta 40^{\circ}\text{C}$. (Ta=+25 $^{\circ}\text{C}$)
- Operating temperature range -25 $^{\circ}\text{C}$ to +120 $^{\circ}\text{C}$, Electrical specifications at 25 $^{\circ}\text{C}$.
- Packing : 7" reel, machine-ready ,embossed plastic tape (1,000 parts per full reel).