



# SDC2D18LD SERIES

## Low Profile Shielded Power Inductors



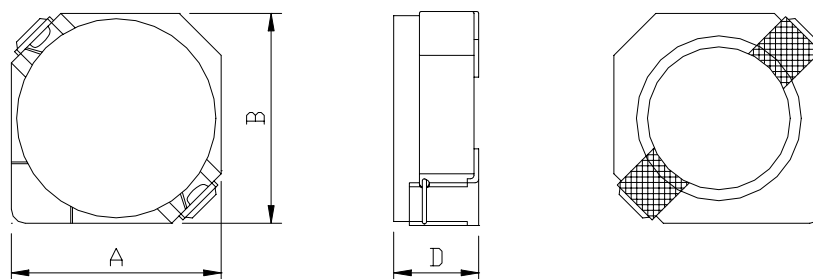
RoHS Compliant

### PART NUMBERING SYSTEM

<b>SDC</b>	<b>2D18LD</b>	—	<b>100N</b>	—	<b>LF</b>
TYPE	DIMENSIONS		INDUCTANCE		LEAD FREE

### SHAPES AND DIMENSIONS

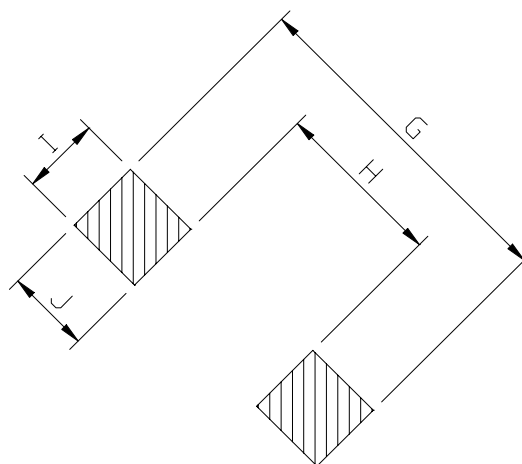
UNIT : mm



A=3.20 max. B=3.20 max. D=2.0 max.

### RECOMMENDED PATTERNS

UNIT : mm



G= 4.3 H= 1.7 I= 1.3 J= 1.3



## SDC2D18LD SERIES

### Low Profile Shielded Power Inductors



RoHS Compliant

#### ELECTRICAL CHARACTERISTICS :

PART NUMBER	INDUCTANCE ( $\mu$ H)	DCR (m $\Omega$ ) (Max.)	Isat (A) ( Max. )	Irms (A) ( Max. )	TEST FREQ. ( f )
SDC2D18LD-2R2N-LF	2.2 $\pm$ 30%	41	0.85	2.30	100KHz
SDC2D18LD-3R3N-LF	3.3 $\pm$ 30%	54	0.75	2.10	100KHz
SDC2D18LD-4R7N-LF	4.7 $\pm$ 30%	78	0.63	1.65	100KHz
SDC2D18LD-6R8N-LF	6.8 $\pm$ 30%	106	0.52	1.32	100KHz
SDC2D18LD-100N-LF	10 $\pm$ 30%	180	0.43	1.00	100KHz
SDC2D18LD-150N-LF	15 $\pm$ 30%	220	0.35	0.80	100KHz
SDC2D18LD-220N-LF	22 $\pm$ 30%	320	0.30	0.68	100KHz
SDC2D18LD-330N-LF	33 $\pm$ 30%	460	0.24	0.56	100KHz
SDC2D18LD-470N-LF	47 $\pm$ 30%	660	0.20	0.48	100KHz

- Isat : DC current at which the inductance drops 35% (typ) from its value without current.
- Irms: The actual current when temperature of coil becomes  $\Delta 40^{\circ}\text{C}$  . (  $T_a=+20^{\circ}\text{C}$  )
- Operating temperature range  $-40^{\circ}\text{C}$  to  $+85^{\circ}\text{C}$  , Electrical specifications at  $20^{\circ}\text{C}$ .
- Packing : 13" reel, machine-ready ,embossed plastic tape ( 3,500 parts per full reel).
- PLATING / SOLDER : TIN-SILVER-COPPER (95.5%/4.0%/0.5%)