



# SDC3D11 SERIES

## Low Profile Shielded Power Inductors



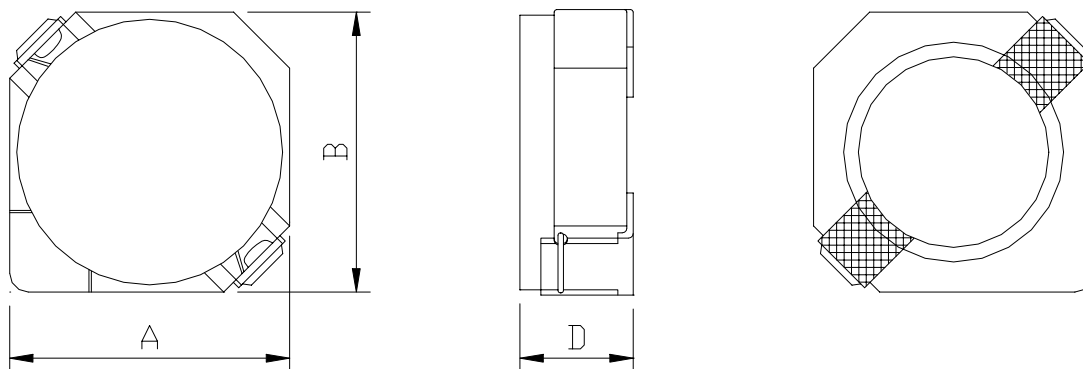
RoHS Compliant

### PART NUMBERING SYSTEM

<b>SDC</b>	<b>3D11</b>	—	<b>2 R 7 N</b>	—	<b>LF</b>
TYPE	DIMENSIONS		INDUCTANCE		LEAD FREE

### SHAPES AND DIMENSIONS

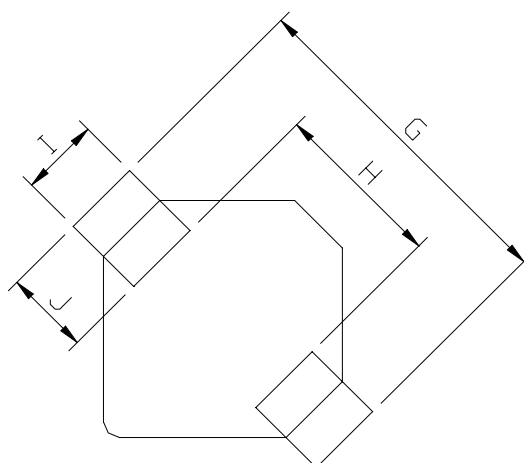
UNIT : mm



**A=4.0 max. B=4.0 max. D=1.2 max.**

### RECOMMENDED PATTERNS

UNIT : mm



**G= 5.2 H= 2.4 I= 1.5 J= 1.4**



## SDC3D11 SERIES

### Low Profile Shielded Power Inductors



RoHS Compliant

#### ELECTRICAL CHARACTERISTICS :

PART NUMBER	INDUCTANCE ( $\mu$ H)	DCR (m $\Omega$ ) (Max.)	Isat (A) ( Max. )	Irms (A) ( Max. )	TEST FREQ. ( f )
SDC3D11-2R7N-LF	2.7 $\pm$ 30%	65	0.53	1.82	100KHz
SDC3D11-4R7N-LF	4.7 $\pm$ 30%	95	0.40	1.38	100KHz
SDC3D11-6R8N-LF	6.8 $\pm$ 30%	150	0.34	1.05	100KHz
SDC3D11-8R2N-LF	8.2 $\pm$ 30%	190	0.32	0.93	100KHz
SDC3D11-100N-LF	10 $\pm$ 30%	200	0.28	0.90	100KHz
SDC3D11-120N-LF	12 $\pm$ 30%	230	0.25	0.81	100KHz
SDC3D11-150N-LF	15 $\pm$ 30%	320	0.23	0.68	100KHz
SDC3D11-180N-LF	18 $\pm$ 30%	400	0.21	0.58	100KHz
SDC3D11-220N-LF	22 $\pm$ 30%	450	0.19	0.53	100KHz
SDC3D11-270N-LF	27 $\pm$ 30%	650	0.17	0.48	100KHz
SDC3D11-330N-LF	33 $\pm$ 30%	700	0.15	0.41	100KHz
SDC3D11-390N-LF	39 $\pm$ 30%	850	0.14	0.40	100KHz

- Isat : DC current at which the inductance drops 35% (typ) from its value without current.
- Irms: The actual current when temperature of coil becomes  $\Delta 40^{\circ}\text{C}$  . ( Ta=+20 $^{\circ}\text{C}$  )
- Operating temperature range -40 $^{\circ}\text{C}$  to +85 $^{\circ}\text{C}$  , Electrical specifications at 20 $^{\circ}\text{C}$ .
- Packing : 13" reel, machine-ready ,embossed plastic tape ( 2,000 parts per full reel).