



SDC3D16LD SERIES

Low Profile Shielded Power Inductors



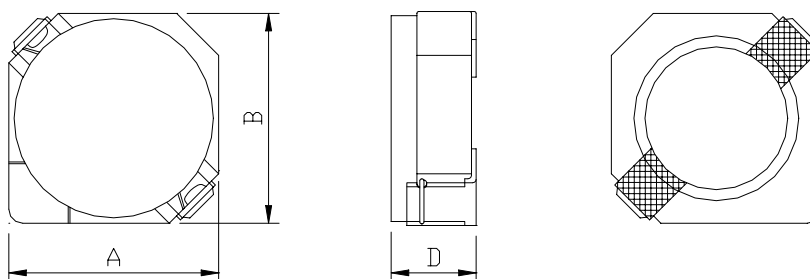
RoHS Compliant

PART NUMBERING SYSTEM

| | | | | | |
|-------------------|----------------------|---|--------------------|---|------------------|
| <u>SDC</u> | <u>3D16LD</u> | — | <u>3R3N</u> | — | <u>LF</u> |
| TYPE | DIMENSIONS | | INDUCTANCE | | LEAD FREE |

SHAPES AND DIMENSIONS

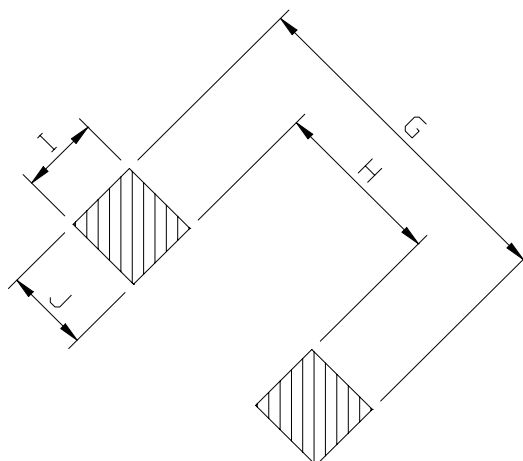
UNIT : mm



A=4.00 max. B=4.00 max. D=1.8 max.

RECOMMENDED PATTERNS

UNIT : mm



G= 5.2 H= 2.4 I = 1.5 J = 1.4



SDC3D16LD SERIES

Low Profile Shielded Power Inductors



RoHS Compliant

SPECIFICATION TABLE

| PART NUMBER | INDUCTANCE (μ H) | DCR (m Ω) (Max.) | Isat (A) (Max.) | Irms (A) (Max.) | TEST FREQ. (f) |
|-------------------|--------------------------|-----------------------------|----------------------|----------------------|---------------------|
| SDC3D16LD-3R3N-LF | 3.3 \pm 30% | 66 | 0.80 | 2.00 | 100KHz |
| SDC3D16LD-3N9N-LF | 3.9 \pm 30% | 81 | 0.75 | 1.75 | 100KHz |
| SDC3D16LD-4R7N-LF | 4.7 \pm 30% | 91 | 0.68 | 1.72 | 100KHz |
| SDC3D16LD-5N6N-LF | 5.6 \pm 30% | 102 | 0.62 | 1.64 | 100KHz |
| SDC3D16LD-6N8N-LF | 6.8 \pm 30% | 130 | 0.58 | 1.30 | 100KHz |
| SDC3D16LD-8N2N-LF | 8.2 \pm 30% | 140 | 0.51 | 1.28 | 100KHz |
| SDC3D16LD-100N-LF | 10 \pm 30% | 190 | 0.46 | 1.07 | 100KHz |
| SDC3D16LD-120N-LF | 12 \pm 30% | 205 | 0.42 | 0.98 | 100KHz |
| SDC3D16LD-150N-LF | 15 \pm 30% | 272 | 0.38 | 0.87 | 100KHz |
| SDC3D16LD-180N-LF | 18 \pm 30% | 327 | 0.34 | 0.76 | 100KHz |
| SDC3D16LD-220N-LF | 22 \pm 30% | 356 | 0.31 | 0.66 | 100KHz |
| SDC3D16LD-270N-LF | 27 \pm 30% | 470 | 0.28 | 0.60 | 100KHz |
| SDC3D16LD-330N-LF | 33 \pm 30% | 560 | 0.26 | 0.55 | 100KHz |
| SDC3D16LD-390N-LF | 39 \pm 30% | 700 | 0.24 | 0.47 | 100KHz |
| SDC3D16LD-470N-LF | 47 \pm 30% | 775 | 0.21 | 0.45 | 100KHz |

- Isat : DC current at which the inductance drops 35% (typ) from its value without current.
- Irms: The actual current when temperature of coil becomes $\Delta 40^{\circ}\text{C}$. (Ta=+20 $^{\circ}\text{C}$)
- Operating temperature range -40 $^{\circ}\text{C}$ to +85 $^{\circ}\text{C}$, Electrical specifications at 20 $^{\circ}\text{C}$.
- Packing : 13" reel, machine-ready ,embossed plastic tape (2,000 parts per full reel).



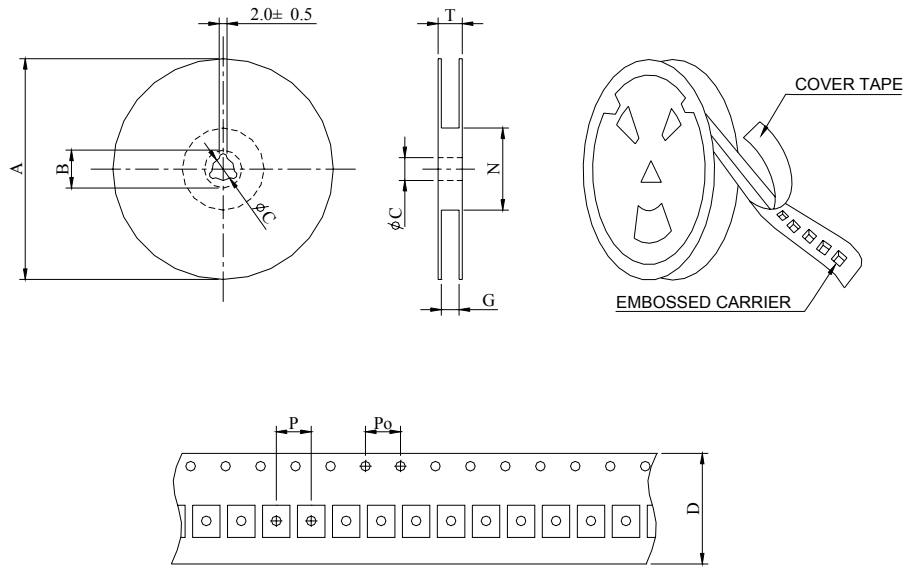
SDC3D16LD SERIES

Low Profile Shielded Power Inductors



RoHS Compliant

PACKAGING SPECIFICATION



| SERIES | STAYLE | Q' TY (PCS) | DIMENSIONS (m/m) | | | | | | | | |
|-----------|--------|----------------|------------------|-------|-------|----|-----------------|-----------------|---|----|------|
| | | | A | B±0.8 | C±0.5 | D | G ⁺⁰ | N ⁻⁰ | P | Po | T |
| SDC3D16LD | 13-16 | 2000 | 330 | 21 | 13 | 16 | 18 | 50 | 8 | 4 | 22.4 |