



# SDC3D18J SERIES

## Low Profile Shielded Power Inductors



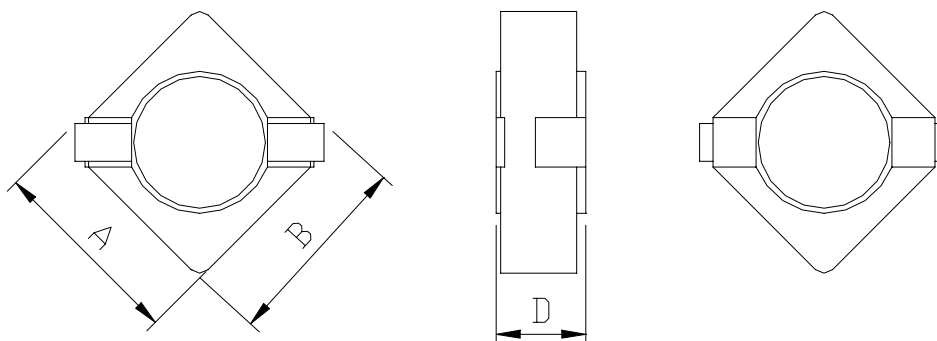
RoHS Compliant  
 RoHS Compliant

### PART NUMBERING SYSTEM

<u>SDC</u>	<u>3 D 1 8 J</u>	—	<u>1 R 5 N</u>	—	<u>LF</u>
TYPE	DIMENSIONS		INDUCTANCE		LEAD FREE

### SHAPES AND DIMENSIONS

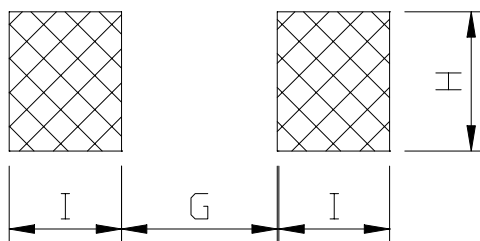
UNIT : mm



**A=3.8 max. B=3.8 max. D=2.0 max.**

### RECOMMENDED PATTERNS

UNIT : mm



**G=2.4 H=1.5 I=1.5**



## SDC3D18J SERIES

### Low Profile Shielded Power Inductors



RoHS Compliant

#### ELECTRICAL CHARACTERISTICS :

PART NUMBER	INDUCTANCE ( $\mu$ H)	DCR (m $\Omega$ ) (Max.)	Isat (A) ( Max. )	Irms (A) ( Max. )	TEST FREQ. ( f )
SDC3D18J-1R5N-LF	1.5 $\pm$ 30%	45	2.20	3.00	100KHz
SDC3D18J-3R3N-LF	3.3 $\pm$ 30%	75	1.45	2.20	100KHz
SDC3D18J-4R7N-LF	4.7 $\pm$ 30%	95	1.25	2.05	100KHz
SDC3D18J-5R6N-LF	5.6 $\pm$ 30%	115	1.10	1.98	100KHz
SDC3D18J-6R8N-LF	6.8 $\pm$ 30%	135	1.04	1.85	100KHz
SDC3D18J-8R2N-LF	8.2 $\pm$ 30%	180	0.95	1.65	100KHz
SDC3D18J-100M-LF	10 $\pm$ 20%	210	0.85	1.53	100KHz
SDC3D18J-120M-LF	12 $\pm$ 20%	230	0.77	1.45	100KHz
SDC3D18J-150M-LF	15 $\pm$ 20%	330	0.65	1.16	100KHz
SDC3D18J-220M-LF	22 $\pm$ 20%	410	0.57	0.98	100KHz

- Isat : DC current at which the inductance drops 30% (typ) from its value without current.
- Iirms : The actual current when temperature of coil becomes  $\Delta$ 40°C . ( Ta=+25°C )
- Operating temperature range -25°C to +120°C, Electrical specifications at 25°C.
- Packing : 7" reel, machine-ready ,embossed plastic tape ( 1,000 parts per full reel).