



SDT1608 SERIES –Shielded SMD Power Inductors



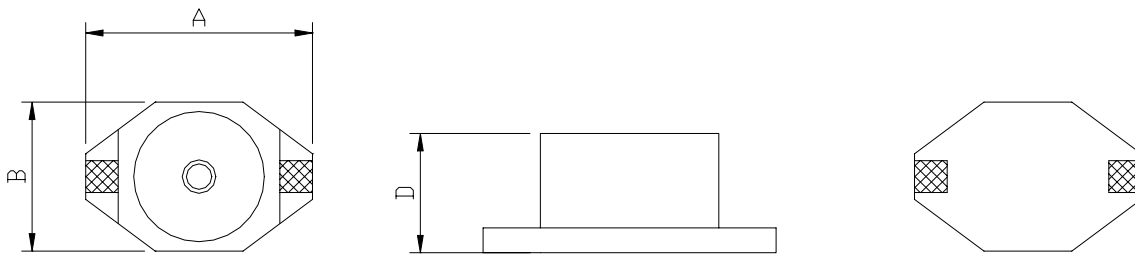
RoHS Compliant

PART NUMBERING SYSTEM

SDT	1 6 0 8	-	1 0 1 M	-	LF
TYPE	DIMENSIONS		INDUCTANCE		LEAD FREE

SHAPES AND DIMENSIONS

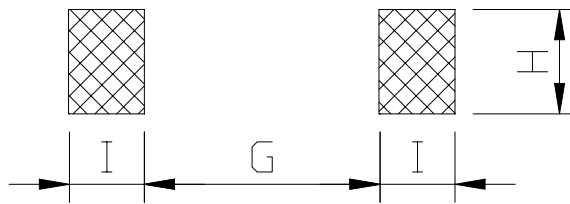
UNIT : mm



A=6.60 max. B=4.45 max. D=2.92 max.

RECOMMENDED PATTERNS

UNIT : mm



G= 4.06 H= 3.56 I = 1.40



SDT1608 SERIES –Shielded SMD Power Inductors



RoHS Compliant

SPECIFICATION TABLE

PART NUMBER	INDUCTANCE (μ H)	INDUCTANCE Rating (μ H)	DCR (Ω) (Max.)	IDC (A)	Switching Freq. Max. (f)
SDT1608-1R0M-LF	1.0 \pm 20%	0.6	0.045	2.0	1MHHz
SDT1608-1R5M-LF	1.5 \pm 20%	0.8	0.050	1.9	1MHHz
SDT1608-2R2M-LF	2.2 \pm 20%	0.9	0.065	1.5	1MHHz
SDT1608-3R3M-LF	3.3 \pm 20%	1.5	0.070	1.2	1MHHz
SDT1608-4R7M-LF	4.7 \pm 20%	2.0	0.080	1.2	1MHHz
SDT1608-6R8M-LF	6.8 \pm 20%	3.0	0.085	1.0	1MHHz
SDT1608-100M-LF	10 \pm 20%	5.0	0.095	0.7	1MHHz
SDT1608-150M-LF	15 \pm 20%	6.0	0.135	0.6	1MHHz
SDT1608-220M-LF	22 \pm 20%	10	0.160	0.5	1MHHz
SDT1608-330M-LF	33 \pm 20%	12	0.275	0.45	1MHHz
SDT1608-470M-LF	47 \pm 20%	20	0.300	0.34	1MHHz
SDT1608-680M-LF	68 \pm 20%	30	0.575	0.29	1MHHz
SDT1608-101M-LF	100 \pm 20%	40	1.100	0.24	1MHHz
SDT1608-151M-LF	150 \pm 20%	60	1.400	0.20	500KHz
SDT1608-221M-LF	220 \pm 20%	90	2.250	0.17	500KHz
SDT1608-331M-LF	330 \pm 20%	100	2.900	0.16	500KHz
SDT1608-471M-LF	470 \pm 20%	150	3.600	0.14	500KHz
SDT1608-681M-LF	680 \pm 20%	200	4.550	0.12	500KHz
SDT1608-102M-LF	1000 \pm 20%	400	8.100	0.08	500KHz

Inductance tested at 100 kHz, 0.1 Vrms.

Average maximum allowable current. SDT1608 are designed for current spikes as high as twice the current rating.

Operating temperature range -40 to +85 , Electrical specifications at 25°C.

Packing : 13" reel, machine-ready ,embossed plastic tape (2,000 parts per full reel).