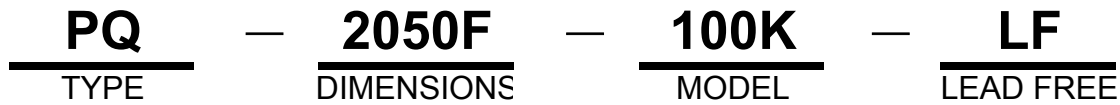




# SMT Power Inductors ~ PQ2050F-LF SERIES



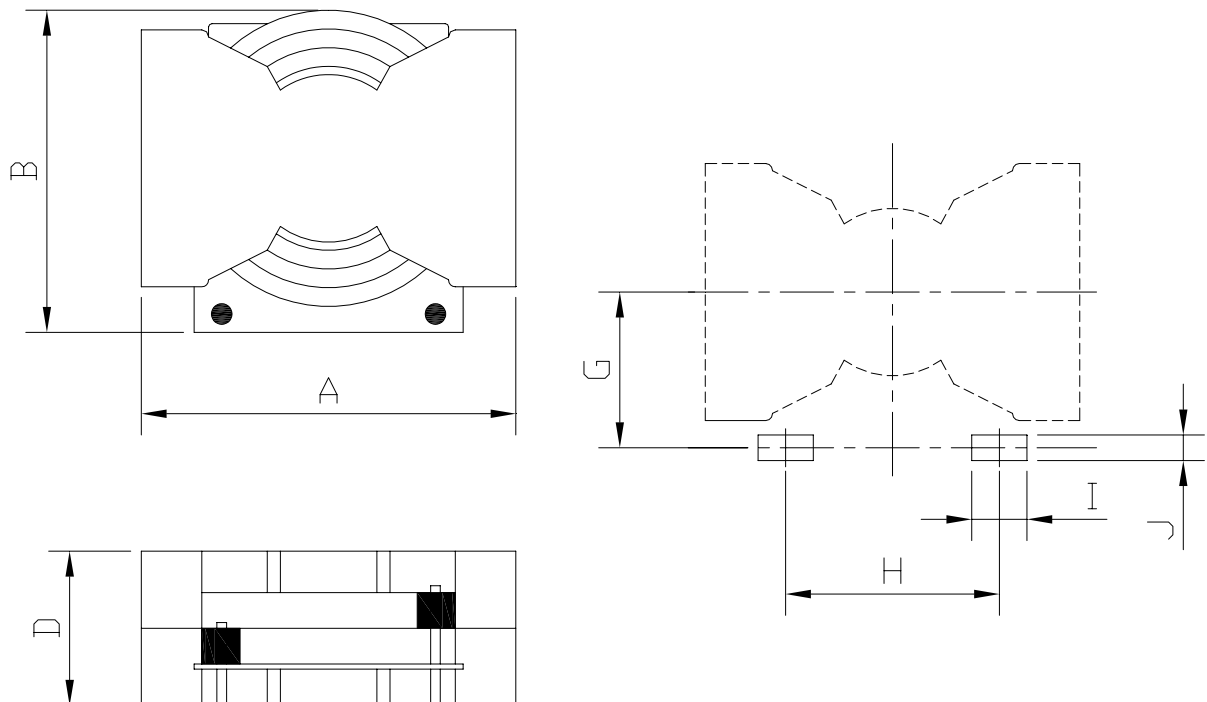
## PART NUMBERING SYSTEM



## FEATURES

- Inductance range from **5.8uH to 57.8uH**
- Fsize : **22.23(L)x20.8(W)x12.2(Ht)mm Max.**
- DC Current Rating : **Over 22Apk**
- **1500 Vrms isolation from primary and bias to secondary windings**
- Terminal RoHS tine-Silver over tin over nickel over phos bronze

## SHAPES AND DIMENSIONS



A=22.23 Max. B=20.8 Max. D=12.2 Max. G=8.50 Ref. H=11.80 Ref. I=5.20 rf. J=2.50 Ref.

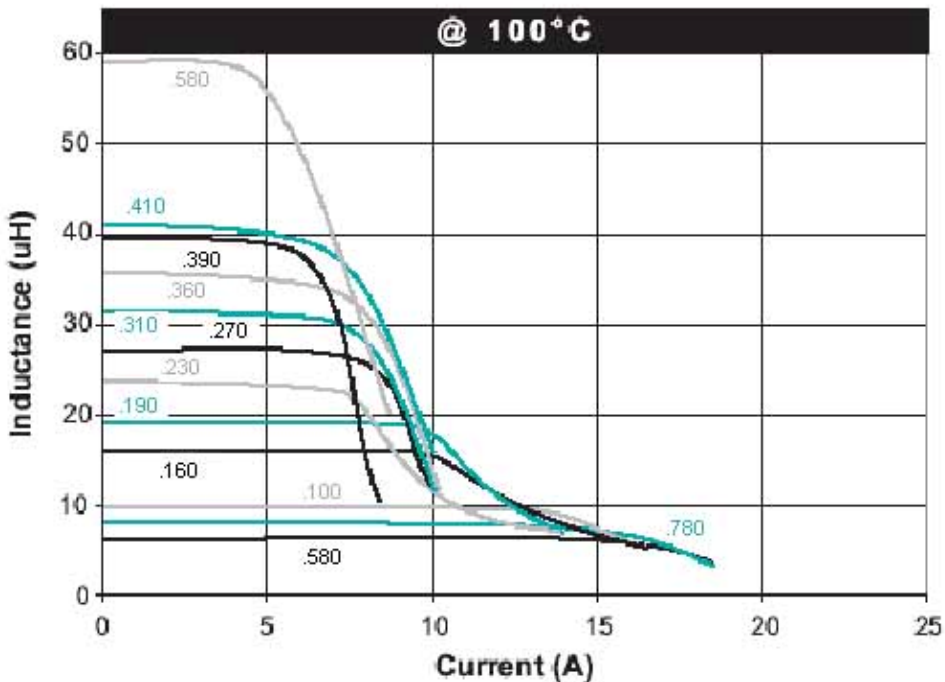
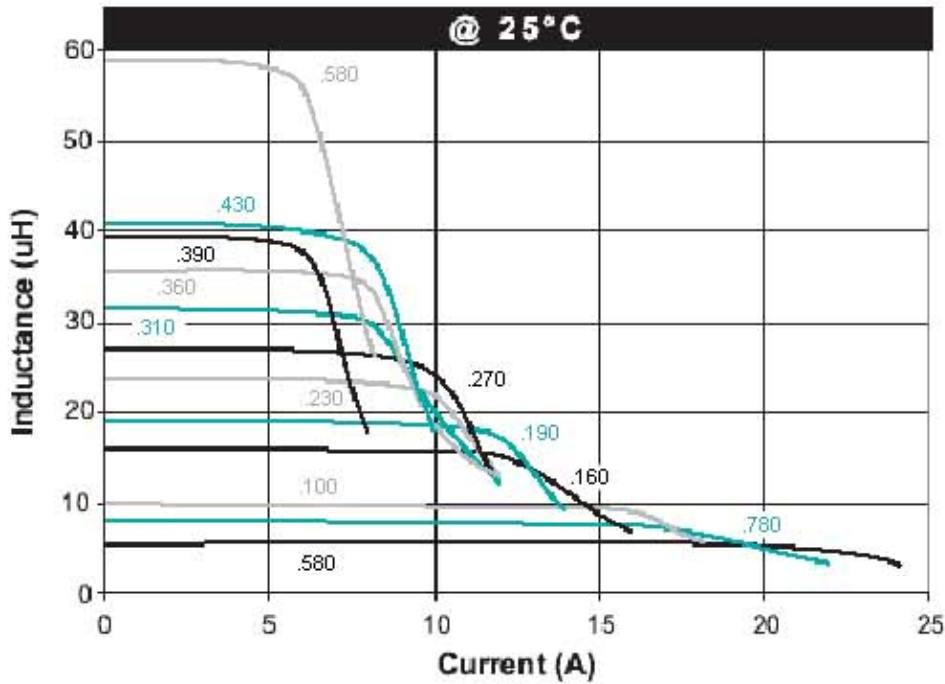


# SMT Power Inductors ~ PQ2050F-LF SERIES

## Inductance vs Current Characteristics



RoHS Compliant





## SMT Power Inductors ~ PQ2050F-LF SERIES

### ELECTRICAL CHARACTERISTICS :

PART NUMBER	Inductance ( uH )@ 0A	Irated ( ADC )	DCR (mohm)	Isat (A TYP)		Irms (A TYP)	Core Loss Factor K2
				25°C	100°C		
PQ2050F-5R8K-LF	5.8±10%	14.4	4.75	22.0	17.0	14.4	155
PQ2050F-7R8K-LF	7.8±10%	13.3	5.51	18.0	16.0	13.3	181
PQ2050F-100K-LF	10.2±10%	12.5	6.26	16.0	15.0	12.5	206
PQ2050F-160K-LF	16.0±10%	9.90	9.83	12.0	11.0	9.9	258
PQ2050F-190K-LF	19.4±10%	8.50	13.61	11.0	10.0	8.5	284
PQ2050F-230K-LF	23.0±10%	8.00	14.8	9.8	8.0	8.1	310
PQ2050F-270K-LF	27.0±10%	7.80	16.09	9.0	8.0	7.8	335
PQ2050F-310K-LF	31.4±10%	6.70	21.82	8.4	8.0	6.7	361
PQ2050F-360K-LF	36.0±10%	6.00	23.33	8.0	6.0	6.5	387
PQ2050F-390K-LF	38.9±10%	6.00	20.3	6.3	6.0	6.2	482
PQ2050F-410K-LF	41.0±10%	6.00	24.95	7.3	6.0	6.2	413
PQ2050F-580K-LF	57.8±10%	5.00	37.26	6.2	5.0	5.1	490

- 1) Inductance measured at 100 kHz, 1 Vrms, 0 Adc.
- 2) HI-POT test @ 3 sec. 1mA
- 3) Electrical specifications at 25°C