



# SQH2510 SERIES ~ **New Products**



RoHS Compliant

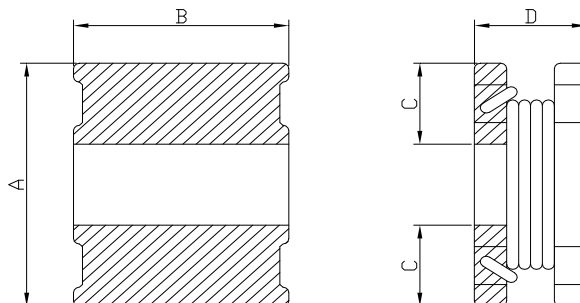
## Low Profile SMD Power Inductors

### PART NUMBERING SYSTEM

<b>SQH</b>	<b>2510</b>	—	<b>6R8M</b>	—	<b>LF</b>
TYPE	DIMENSIONS		INDUCTANCE		LEAD FREE

### SHAPES AND DIMENSIONS

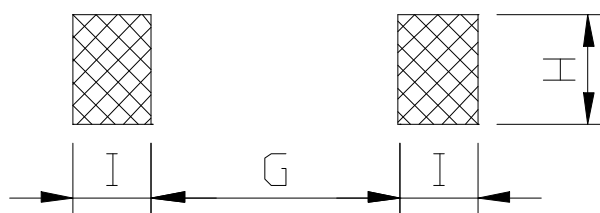
UNIT : mm



**A=2.7 Max. B=2.3 Max. C=0.8 Typ. D=1.05 Max**

### RECOMMENDED PATTERNS

UNIT : mm



**G=0.8 Ref. H=2.5 Ref. I=1.2 Ref.**

### FEATURES

1. Very small power inductor - only 1.05 mm high, 2.5 mm square.
2. Handles current **up to 2.0 Asat, 1.9 Arms**
3. Inductance range from **1.0uH to 22uH**
4. **RoHS-compliant** – 260°C compatible



## SQH2510 SERIES ~ **New Products**

### Low Profile SMD Power Inductors



RoHS Compliant

#### SPECIFICATION TABLE

PART NUMBER	INDUCTANCE ( $\mu$ H)	DCR ( $\Omega$ ) (Max.)	Isat (mA) (Max.)	Irms (mA) (Max.)	Test Freq. ( Hz )
SQH2510-1R0M-LF	1.0 $\pm$ 20%	0.14	2.00	1.90	1MHz/0.25V
SQH2510-1R5M-LF	1.5 $\pm$ 20%	0.19	1.80	1.64	1MHz/0.25V
SQH2510-2R2M-LF	2.2 $\pm$ 20%	0.29	1.40	1.60	1MHz/0.25V
SQH2510-3R3M-LF	3.3 $\pm$ 20%	0.37	1.20	1.10	1MHz/0.25V
SQH2510-4R7M-LF	4.7 $\pm$ 20%	0.49	1.00	1.02	1MHz/0.25V
SQH2510-5R6M-LF	5.6 $\pm$ 20%	0.60	0.96	0.88	1MHz/0.25V
SQH2510-6R8M-LF	6.8 $\pm$ 20%	0.76	0.84	0.82	1MHz/0.25V
SQH2510-100M-LF	10 $\pm$ 20%	0.99	0.70	0.74	1MHz/0.25V
SQH2510-220M-LF	22 $\pm$ 20%	2.27	0.49	0.46	1MHz/0.25V

- Inductance using an Agilent/HP 4284A LCR meter or equivalent.
- Isat: DC current at which the inductance drops 10% (max) from its value without current.
- Irms: Current that causes specified temperature rise from 25°C ambient.
- Operating temperature range -40°C to +85°C ,
- Electrical specifications at 25°C .