



SQH8040S SERIES ~ **New Products**



RoHS Compliant

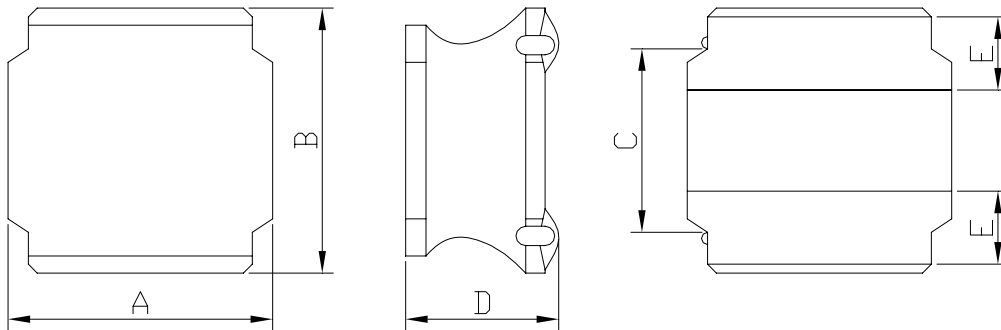
Low Profile SMD Power Inductors

PART NUMBERING SYSTEM

SQH	8040S	—	220M	—	LF
TYPE	DIMENSIONS		INDUCTANCE		LEAD FREE

SHAPES AND DIMENSIONS

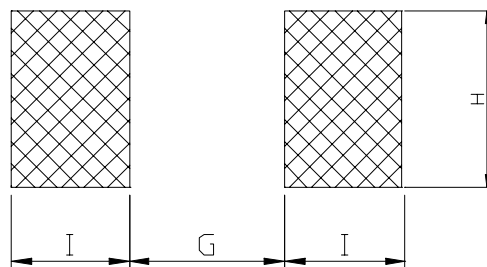
UNIT : mm



A=8.2 Max. B=8.2 Max. C=4.0 Ref. E=1.35±0.2
 0R9~6R8 Type D=4.2 Max.
 100~101 Type D=4.0 Max.

RECOMMENDED PATTERNS

UNIT : mm



G= 3.10 H= 5.70 I = 1.60

FEATURES

- * Low profile and small inductors (6.2mm Max. square and 4.0mm Max. height)
- * Magnetically shielded construction and high current
- * Ideal for DC-DC converter choke coil for portable equipments (DVDs , DSC , Cellular , PDAs)
- * RoHS compliant option with lead free



SQH8040S SERIES ~ **New Products**

Low Profile SMD Power Inductors



RoHS Compliant

SPECIFICATION TABLE

PART NUMBER	INDUCTANCE (μ H)	DCR (m Ω) (Max.)	Isat (A) (Max.)	Irms (mA) (Max.)	TEST FREQ. (f)
SQH8040S-0R9N-LF	0.9 \pm 30%	7.80	11.0	7.80	100KHz
SQH8040S-1R4N-LF	1.4 \pm 30%	9.10	9.00	7.00	100KHz
SQH8040S-2R0N-LF	2.0 \pm 30%	11.7	7.40	6.30	100KHz
SQH8040S-3R6M-LF	3.6 \pm 30%	19.5	5.30	4.90	100KHz
SQH8040S-4R7N-LF	4.7 \pm 30%	23.4	4.70	4.10	100KHz
SQH8040S-6R8N-LF	6.8 \pm 30%	32.5	4.00	3.70	100KHz
SQH8040S-100M-LF	10 \pm 20%	44.2	3.40	3.10	100KHz
SQH8040S-150M-LF	15 \pm 20%	65.0	2.70	2.40	100KHz
SQH8040S-220M-LF	22 \pm 20%	85.8	2.20	2.20	100KHz
SQH8040S-330M-LF	33 \pm 20%	130	1.90	1.70	100KHz
SQH8040S-470M-LF	47 \pm 20%	195	1.50	1.40	100KHz
SQH8040S-680M-LF	68 \pm 20%	299	1.20	1.10	100KHz
SQH8040S-101M-LF	100 \pm 20%	377	1.00	1.00	100KHz

- Isat : DC current at which the inductance drops 30%(typ) from its value without current.
- Irms : The temperature rise current value is the DC current value having temperature increase up 40°C temperature rise from 20°C ambient.
- Operating temperature range -40°C to +85°C , Electrical specifications at 20°C .